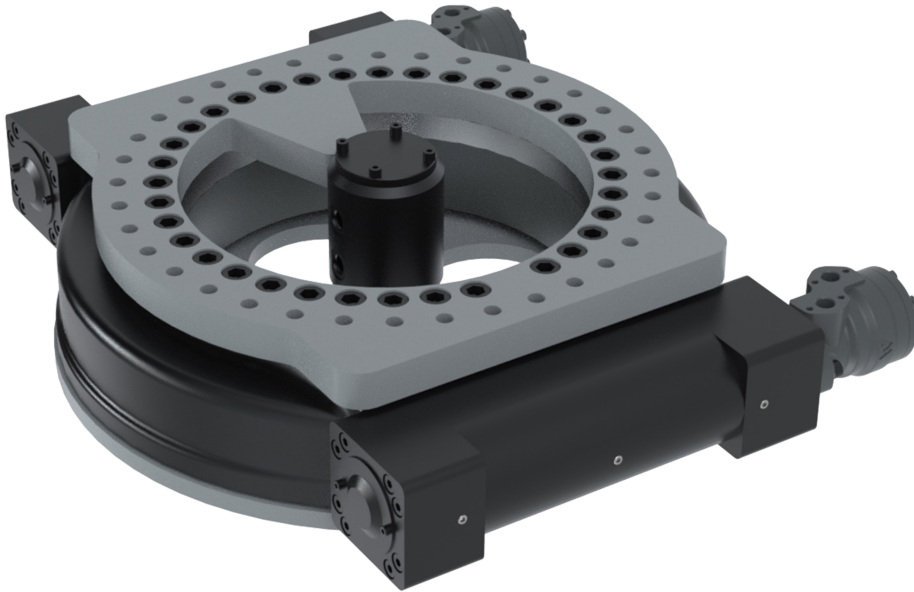


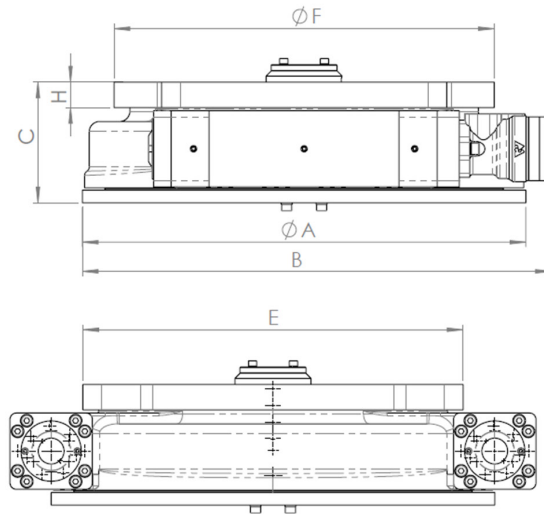
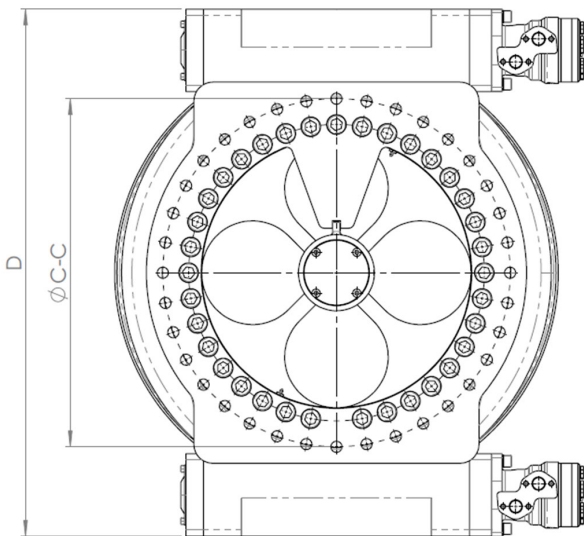
Worm Drive 21-2 GS

SPECIALLY DESIGNED LOW RATIO WORM DRIVES FOR SAFE AND SMOOTH OPERATION



KEY FEATURES

- For grapple saw
- Low built
- High torque
- Exact positioning
- High axial and radial load capacity



WDR 21-2 GS	
A	700
B	740
C	190
D	830
E	600
F	600
H	40
C-C	36xM20 D548

MODEL SPECIFICATIONS

WDR 21-2 GS	287	40	16	300	100	70	2x18	140	6100	3,1 rpm	G 1/2"	G 1/2"	G 3/4"	18-25

